



FAVORITE ENGLISH SONGS



A Song of Comfort, . . . Davidson	.50	In Sweet September, D, D-F, Temple	.35
Afterwards, C, D-E, . . . Mullen	.50	Leonore, Ab, F-F, . . . Trotere	.50
Beauty's Eyes, C, A-C, . . . Tosti	.50	Love's Proving, D, E-E, . . . Lohr	.50
By the Fountain, G, D-G, . . . Adams	.50	My Lady's Bower, Eb, A-D, Temple	.50
Could I, Ab, C-D, Tosti	.50	My Dearest Heart, G, D-D, Sullivan	.35
Call Me Back, Bb, C-F, . . . Denza	.50	New Kingdom, Tours	.50
Dutch Dolls, D, B-E, . . . Ostlere	.50	Only Once More, F, C-F, . . . Moir	.40
Dear Heart, C, C-D, . . . Mattei	.50	On Venice Waters, Ab, E-G, Roeder	.50
Daddy, Ab, E-F, . . . Behrend	.50	Queen of the Earth, D, E-A, Pinsuti	.40
Dreaming, F, C-F, . . . Wellings	.35	Queen of My Heart, Eb, B-E, Cellier	.50
For You, Ab, D-G, . . . Sidney Smith	.50	Sally in Our Alley, Bb, C-G, Carey	.40
Fiddle and I, Bb, D-F (Violin Obligato), Goodeve	.60	Tell Her I Love Her So, F, G-F, De Faye	.35
Garden of Sleep, Ab, C-E, . . . De Lara	.50	Thursday, Eb, A-E, . . . Molloy	.50
Good-bye, F, C-Db. . . . Tosti	.50		



MCKINLEY MUSIC CO.

CHICAGO.

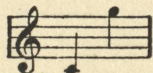
NEW YORK.

O LEAVE ME NOT DEAR HEART.

Words by G. CLIFTON BINGHAM.

MEZZO-SOPRANO IN C.

TITO MATTEI.



PIANO. *mf* *p*

ped. * *ped.* *

So long the day, so dark the way, Dear heart, be-fore you
With you a - - way, the bright - est day, Dear heart, goes by in

cresc. *dim.* *p*

came, It seems to me it can-not be, This world is still the same, For
vain; I dare not dream what life would seem. If you ne'er came a - gain! Dark

cres.

then I stood as in some wood, And vain - - ly sought for light, But
ways be-fore would darken more, The world would change to me; Each

p *cres.*

con espress. ten.

now day dawns on sun-lit lawns, And life is glad and bright.
 sun would set in vain re-gret That morning brought not thee!

p

mf più mosso.

poco rit.

0 leave me not, 0 leave me not, Dear
 0 leave me not, 0 leave me not, Dear

ppiu mosso.

p

Red.

heart, dear heart, I did not dream that we should
 heart, dear heart, I dare not dream that we should

cres.

Red.

part. I love but thee, 0 love thou me, And
part. I love but thee, 0 love thou me, And

accel. e cres.

Red.

542.3-2

stent. *f* *rall.* *accel. e cres.*

leave. and leave me not, Dear heart, dear heart! leave me
 leave. and leave me not, Dear heart, dear heart! leave me

f *Prall.*

Red. Red. Red. * Red. Red. *

1.

not, Dear heart!

mf *pp*

Red. * Red. *

2.

not! leave me not, Dear heart, leave me

pp *lento.* *pp col canto.* *ff deciso.*

Red. Red. *

not, Dear heart!

ff

542.3-3

Red. * (c) *

POPULAR PIANO COMPOSITIONS

THESE PIECES ARE PUBLISHED IN THE BEAUTIFUL & RELIABLE
McKINLEY EDITION OF TEN CENT MUSIC.

THE BIRDS GOODNIGHT SONG.

Eduard Holst.

BEAUTIFUL EVENING STAR.

Eduard Holst.

THE ORPHAN'S PRAYER.

H. Zeiler.

SPRINGTIME. Valse Elegante.

A. A. Ford.

FAREWELL TO HOME.

F. Warner.

SWEET CONTENT.

Reverie.

Frederick Boscovitz.

TITANIA.

Fairy Dance.

Paul B. Armstrong.

CHICAGO

McKINLEY MUSIC CO.

NEW YORK